



STEPHENSON BROWNE

## Mckelvey Way, Audlem, Crewe

CW3 0FH



**75% Shared Ownership**  
**£206,250**

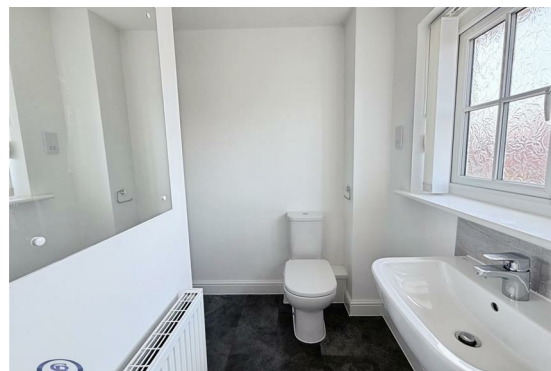
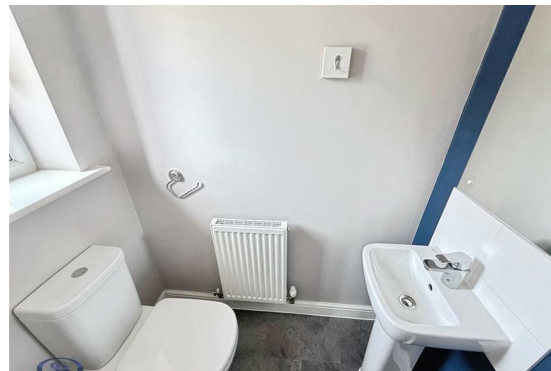
## Description

Stephenson Browne are pleased to present this three bedroom mid mews home available to purchase on a shared ownership basis, ideally positioned within a popular modern development in the highly desirable village of Audlem. Offering spacious, well maintained and move in ready accommodation throughout, this attractive home is perfectly suited to first time buyers, young families or those looking to downsize without compromising on space or convenience.

The ground floor comprises a welcoming entrance hall, convenient downstairs WC, a bright and comfortable lounge, and a stylish contemporary kitchen/diner providing an excellent space for both everyday living and entertaining. Upstairs, the property offers three well-proportioned bedrooms, including a generous principal bedroom benefitting from its own en suite shower room, alongside a modern family bathroom.

Externally, the property enjoys an enclosed rear garden with patio and lawned areas, creating an ideal outdoor space for relaxing or dining during the warmer months. To the front, there are two allocated parking spaces providing practical off road parking.

Situated within walking distance of Audlem's excellent range of local amenities, including shops, cafés, pubs and schools, the property also benefits from easy access to surrounding countryside walks and nearby commuter links to Nantwich, Crewe and Whitchurch. Combining modern living with village charm, this fantastic home offers an excellent opportunity to step onto the



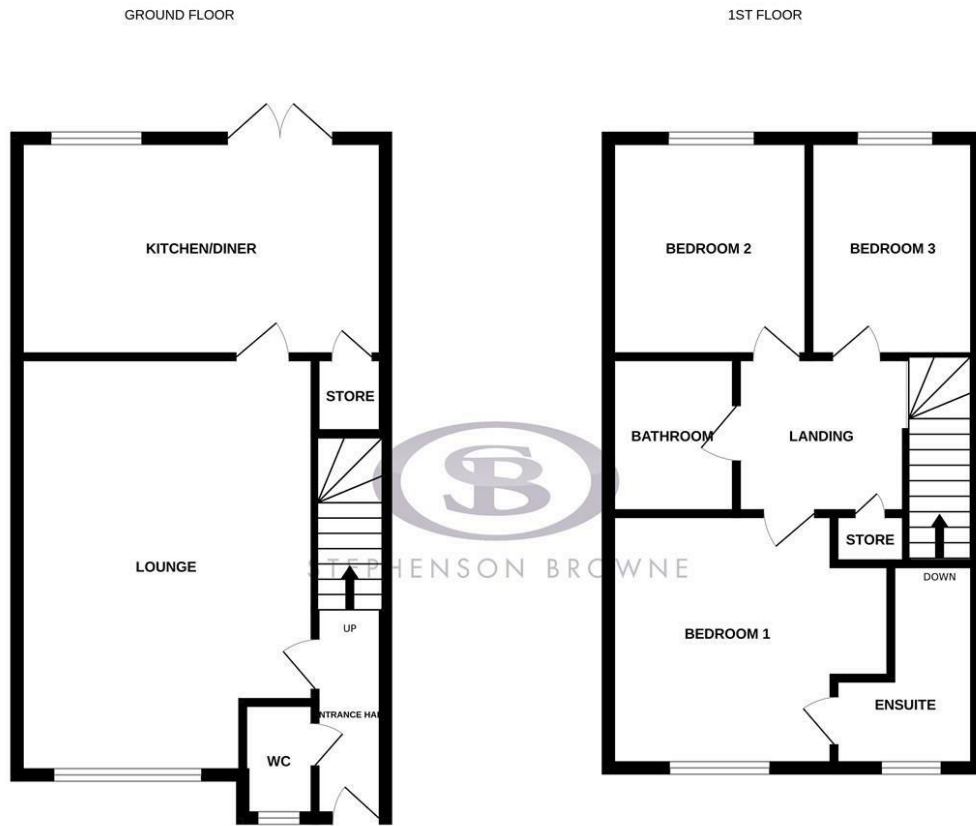
property ladder in a sought-after Cheshire location.



## Viewing

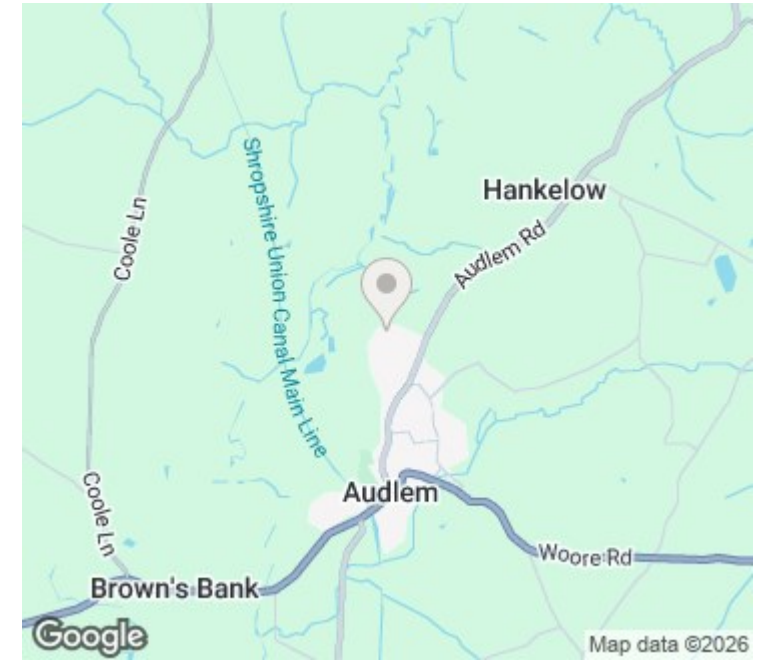
Please contact our office using the details provided on the final page if you are interested in booking a viewing or require further information.

# Floorplans



Whilst every attempt has been made to ensure the accuracy of the floorplan contained here, measurements of doors, windows, rooms and any other items are approximate and no responsibility is taken for any error, omission or mis-statement. This plan is for illustrative purposes only and should be used as such by any prospective purchaser. The services, systems and appliances shown have not been tested and no guarantee as to their operability or efficiency can be given. Made with Metropix ©2025

# Area Map



Energy Efficiency Rating		Current	Potential
Very energy efficient - lower running costs			
(92 plus) <b>A</b>			<b>92</b>
(81-91) <b>B</b>			
(69-80) <b>C</b>		<b>79</b>	
(55-68) <b>D</b>			
(39-54) <b>E</b>			
(21-38) <b>F</b>			
(1-20) <b>G</b>			
Not energy efficient - higher running costs			
<b>England &amp; Wales</b>		EU Directive 2002/91/EC	

Environmental Impact (CO <sub>2</sub> ) Rating		Current	Potential
Very environmentally friendly - lower CO <sub>2</sub> emissions			
(92 plus) <b>A</b>			
(81-91) <b>B</b>			
(69-80) <b>C</b>			
(55-68) <b>D</b>			
(39-54) <b>E</b>			
(21-38) <b>F</b>			
(1-20) <b>G</b>			
Not environmentally friendly - higher CO <sub>2</sub> emissions			
<b>England &amp; Wales</b>		EU Directive 2002/91/EC	

NOTICE: Stephenson Browne for themselves and for the vendors or lessors of this property whose agents they are give notice that: (1) the particulars are set out as a general guideline only for the guidance of intending purchasers or lessees, and do not constitute, nor constitute part of, an offer or contract; (2) all descriptions, dimensions, references to condition and necessary permissions for use and occupation, and other details are given in good faith and are believed to be correct but any intending purchasers or tenants should not rely on them as statements or representations of fact but must satisfy themselves by inspection or otherwise as to the correctness of each theme; (3) no person in the employment of Stephenson Browne has any authority to make representation or warranty whatever in relation to this property. (4) fixtures & fittings are subject to a formal list supplied by the vendors solicitors. **Referring to: Move with Us Ltd Average Fee: £123.64**

**T: 01270 252545 E: [crewe@stephensonbrowne.co.uk](mailto:crewe@stephensonbrowne.co.uk)**

[www.stephensonbrowne.co.uk](http://www.stephensonbrowne.co.uk)